

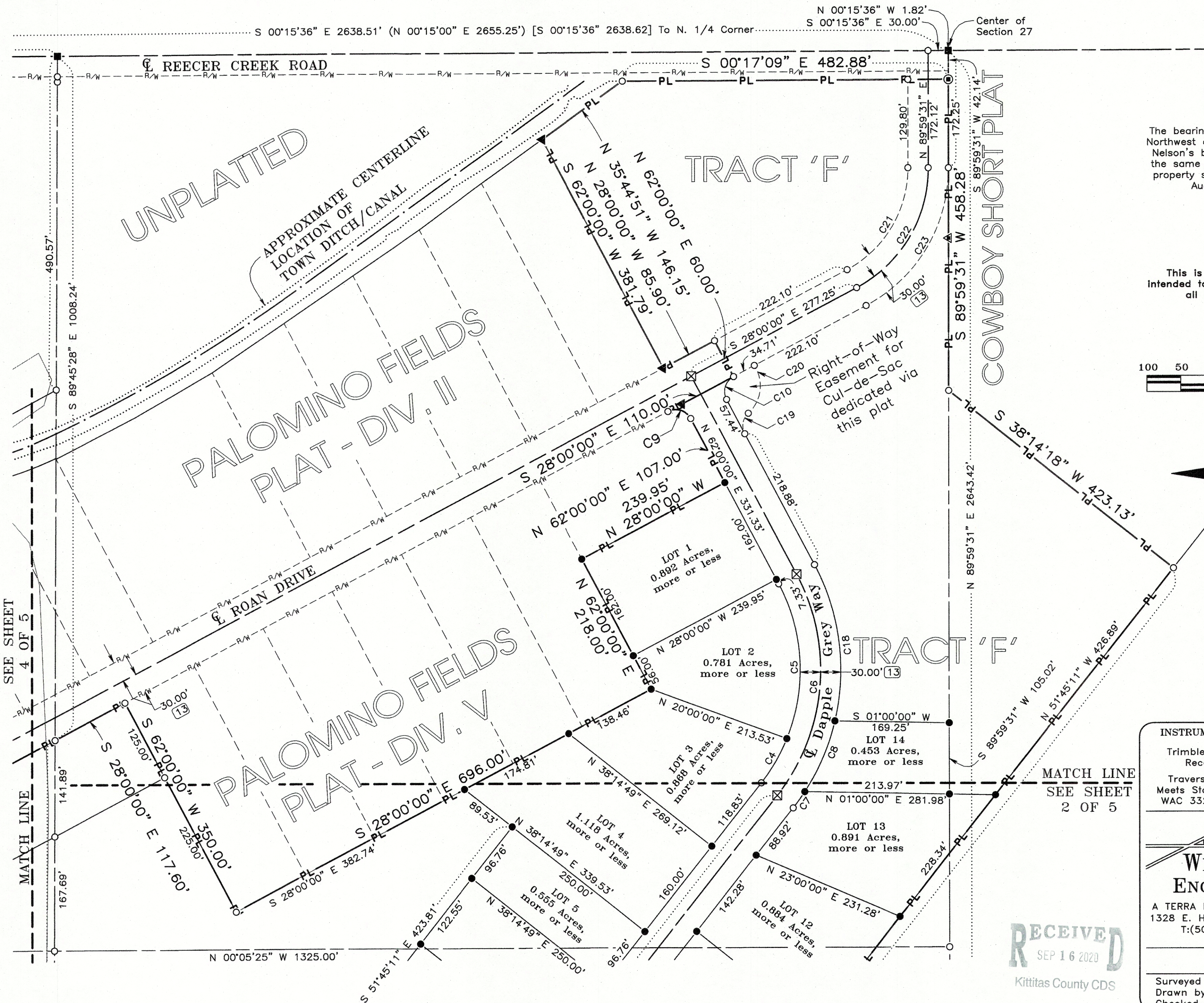
PALOMINO FIELDS PLAT - DIVISION IV

A REPLAT OF TRACTS 'B', 'C', AND 'D', PALOMINO FIELDS PLAT - DIVISION IV
 A PORTION OF THE S 1/2 OF THE NW 1/4 OF SECTION 27, TOWNSHIP 18 NORTH, RANGE 18 EAST, W.M.
 KITTITAS COUNTY, WASHINGTON

Receiving No.

LP - ##-####

181827

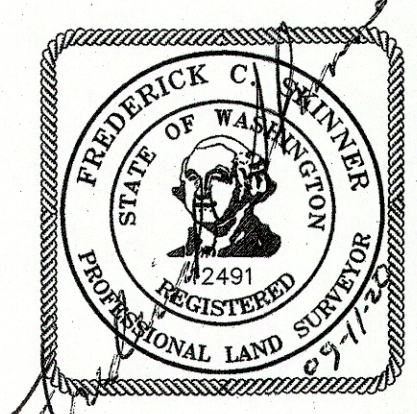
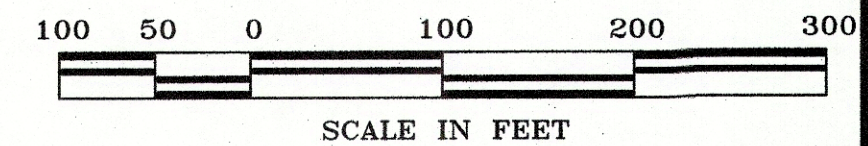


BASIS OF BEARINGS

The bearing for the East boundary line of the Northwest quarter of Section 27 equal Cruse & Nelson's bearing of South 00°15'36" East for the same line as shown on the FHA, U.S.D.A. property survey found under Kittitas County's Auditor File No. 199702200014

NOTICE

This is a Major Plat and as such is not intended to show, nor does it purport to show, all easements and encumbrances.



INSTRUMENT USED	INDEXING DATA
Trimble R10 GPS Receivers	
Traverse Closure Meets Standards Per WAC 332-130-090	

WESTERN PACIFIC ENGINEERING & SURVEY
 A TERRA DEVELOPMENT SERVICES CORPORATION
 1328 E. Hunter Place, Moses Lake, Washington
 T: (509)765-1023 F: (509)765-1298
 Services in Washington and Idaho

RECEIVED
 SEP 16 2020
 Kittitas County CDS

LCU, INC.	
Surveyed by LMH	Scale 1" = 100'
Drawn by Tml/FCS	Sheet 3 of 6
Checked by FCS	Project No. 18146

File --- Project Desc.: S:\18146\18146 DIV 4\18146 MP4.pro (Plotted - Sep 11, 2020)

SEE SHEET 4 OF 5

MATCH LINE

MATCH LINE
 SEE SHEET 2 OF 5